



# GAT MONTHLY MEMBERSHIP PROGRESS REPORT

Results as of: 5/31/2026

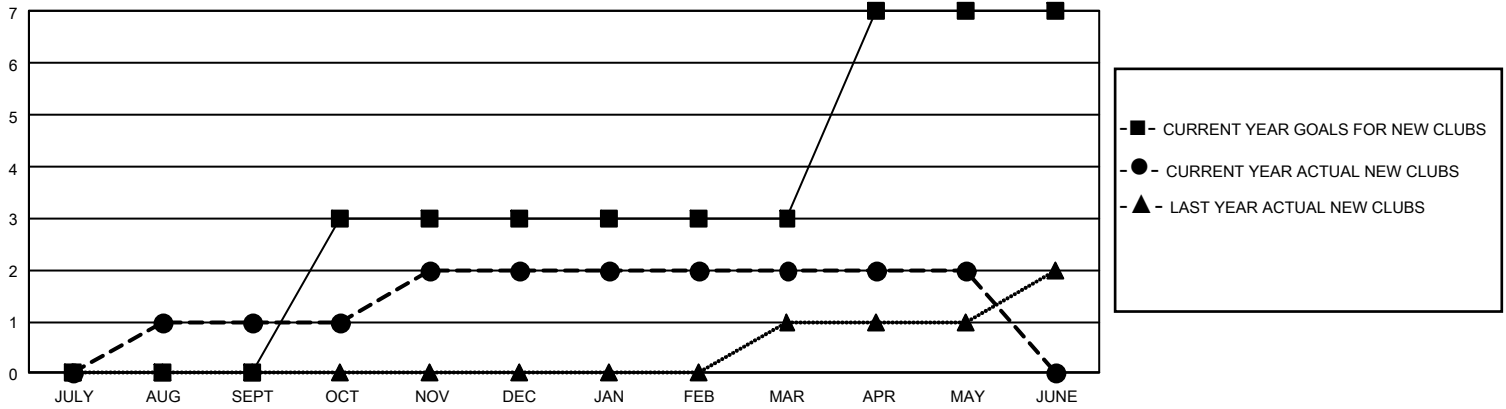
## GMT Constitutional Area 7, Group B

REPORT DOES NOT INCLUDE CLUBS IN UNDISTRICTED AREAS.

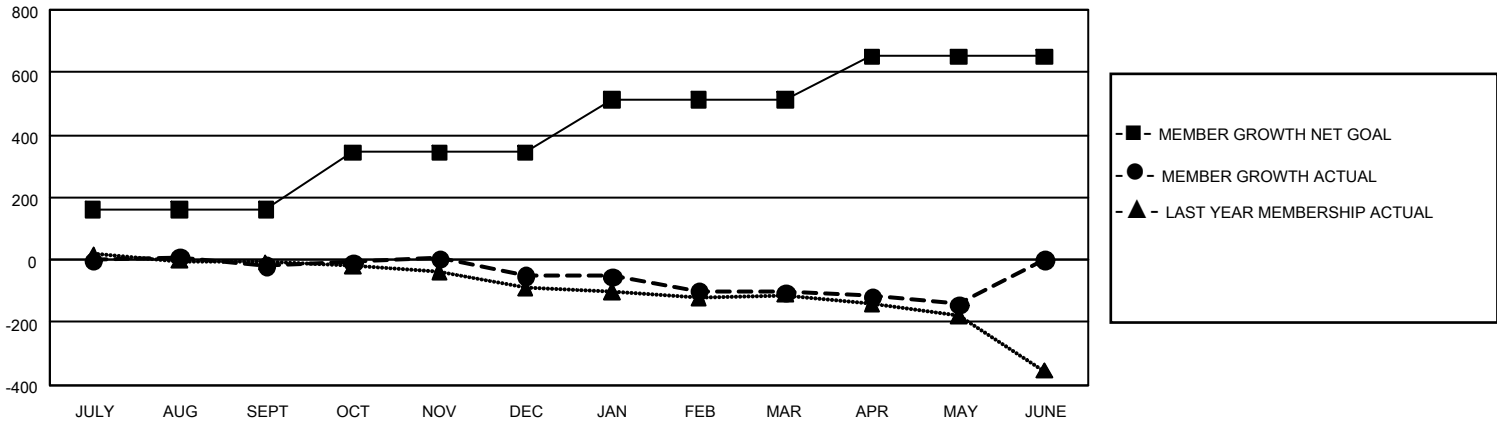
Clubs			
RESULTS FOR 2025-2026			
QUARTER	NEW CLUB GOAL	NEW CLUBS	DROPPED CLUBS
JULY/AUG/SEPT	0	1	4
OCT/NOV/DEC	9	1	2
JAN/FEB/MAR	0	0	0
APR/MAY/JUNE	12	0	0

Members			
RESULTS FOR 2025-2026			
QUARTER	MEMBER GROWTH NET GOAL	MEMBER GROWTH ACTUAL	DROPPED MEMBERS ACTUAL (including transfers)
JULY/AUG/SEPT	162	219	207
OCT/NOV/DEC	182	209	222
JAN/FEB/MAR	168	156	173
APR/MAY/JUNE	139	151	161

GOALS AND ACTUAL NEW CLUBS CUMULATIVE



GOALS AND ACTUAL MEMBERS CUMULATIVE



<b>DROPPED CLUBS: 6</b>	187 CLUBS OF 287 ADDED 1 OR MORE NEW MEMBERS	<u>GENDER DISTRIBUTION</u>	
<u>DROPPED MEMBERS</u>		MALE	4,809 (65.42%)
DECEASED	105	FEMALE	2,538 (34.53%)
CLUB CANCELLED	20	NON BINARY	2 (0.03%)
OTHER	635	PREFER NOT TO ANSWER	2 (0.03%)
<b>TOTAL</b>	<b>760</b>	TOTAL FAMILY UNIT MEMBERS	760
	<a href="#">CLICK HERE FOR CUMULATIVE MEMBERSHIP DATA</a>	FAMILY MEMBERS PAYING HALF DUES	382